



NORWEST

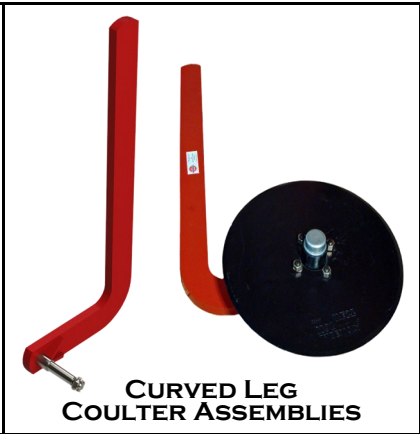
MANUFACTURING

71 SOUTH 215 WEST-RUPERT, ID- PHONE: (208) 436-1770 - FAX: (208) 436-1776

SECTION 200 -30 COULTER ASSEMBLIES & GUIDE WHEELS



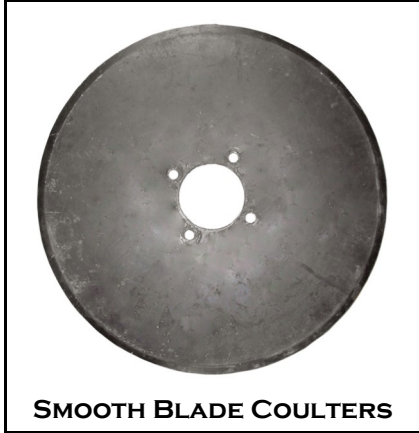
**STRAIGHT LEG
COULTER ASSEMBLIES**



**CURVED LEG
COULTER ASSEMBLIES**



**45° LEG
COULTER ASSEMBLIES**



SMOOTH BLADE COULTERS



NOTCHED BLADE COULTERS

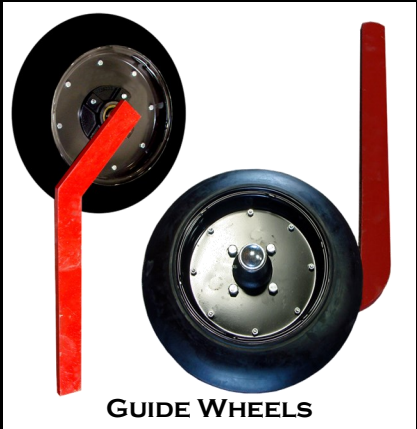


**NORWEST FLUTED COULTER
ASSEMBLIES**



*Norwest Torsion
Spring*

**STABILIZER COULTER
ASSEMBLIES**



GUIDE WHEELS

Straight Leg Coulter Assemblies

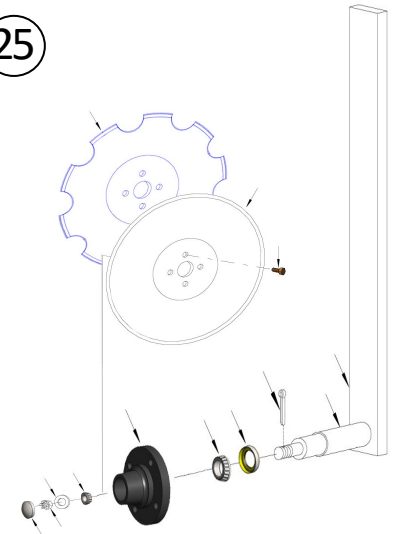


Straight Leg Coulter Blade Series

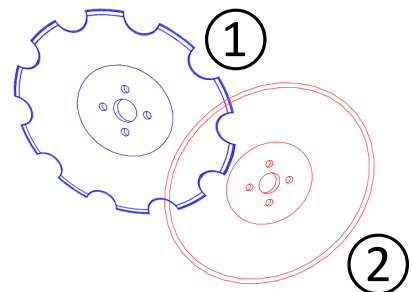
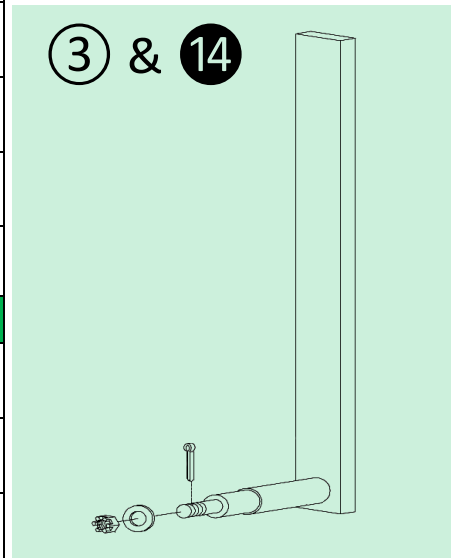
Coulter Blades options:
① = Notched and ② = Smooth

COMPLETE PART NUMBER ⑫	DESCRIPTION	LEG W/SPINDLE ONLY (Less Hub & Blade) ⑬ & ⑭	SPINDLE PART NUMBER	HUB PART NUMBER	BLADE DIAMETER	BLADE PART NUMBER
5/8" x 2" MATERIAL						
G58-S16	5/8" X 2" X 32"	G633SL-580	GQ-633S	GQ-633H	16"	DSR1645
G58-S18	5/8" X 2" X 32"	G633SL-580	GQ-633S	GQ-633H	18"	DSR1860
G58-S20	5/8" X 2" X 32"	G633SL-580	GQ-633S	GQ-633H	20"	DSR2050
G58-S22	5/8" X 2" X 32"	G633SL-580	GQ-633S	GQ-633H	22"	DSR2250
3/4" x 2-1/2" MATERIAL						
G34-S16	3/4" X 2-1/2" X 34"	G633SL-340	GQ-633S	GQ-633H	16"	DSR1645
G34-S18	3/4" X 2-1/2" X 34"	G633SL-340	GQ-633S	GQ-633H	18"	DSR1860
G34-S20	3/4" X 2-1/2" X 34"	G633SL-340	GQ-633S	GQ-633H	20"	DSR2050
G34-S22	3/4" X 2-1/2" X 34"	G633SL-340	GQ-633S	GQ-633H	22"	DSR2250
G34-S24	3/4" X 2-1/2" X 34"	G633SL-340	GQ-633S	GQ-633H	24"	DSR2460
1" x 3" MATERIAL						
G1-S16H	1" X 3" X 36"	G633SL-300	GQ-633S	GQ-633H	16"	DSR1645
G1-S18H	1" X 3" X 36"	G633SL-300	GQ-633S	GQ-633H	18"	DSR1860
G1-S20H	1" X 3" X 36"	G633SL-300	GQ-633S	GQ-633H	20"	DSR2050
G1-S22H	1" X 3" X 36"	G633SL-300	GQ-633S	GQ-633H	22"	DSR2250
G1-S24H	1" X 3" X 36"	G633SL-300	GQ-633S	GQ-633H	24"	DSR2460
G1-S26H	1" X 3" X 36"	G633SL-300	GQ-633S	GQ-633H	26"	DSR2680
G1-S28H	1" X 3" X 36"	G633SL-300	GQ-633S	GQ-633H	28"	DSR2880
G1-S30H	1" X 3" X 36"	G888SL-300H	GQ-888S	GQ-888H	30"	DSR3080

⑫



⑬ & ⑭



Please Note: Blades 30" & larger will be made with a

Straight Leg Coultter Blade Series with **633** Hub & Spindle or **888** Hub & Spindle Component Parts List

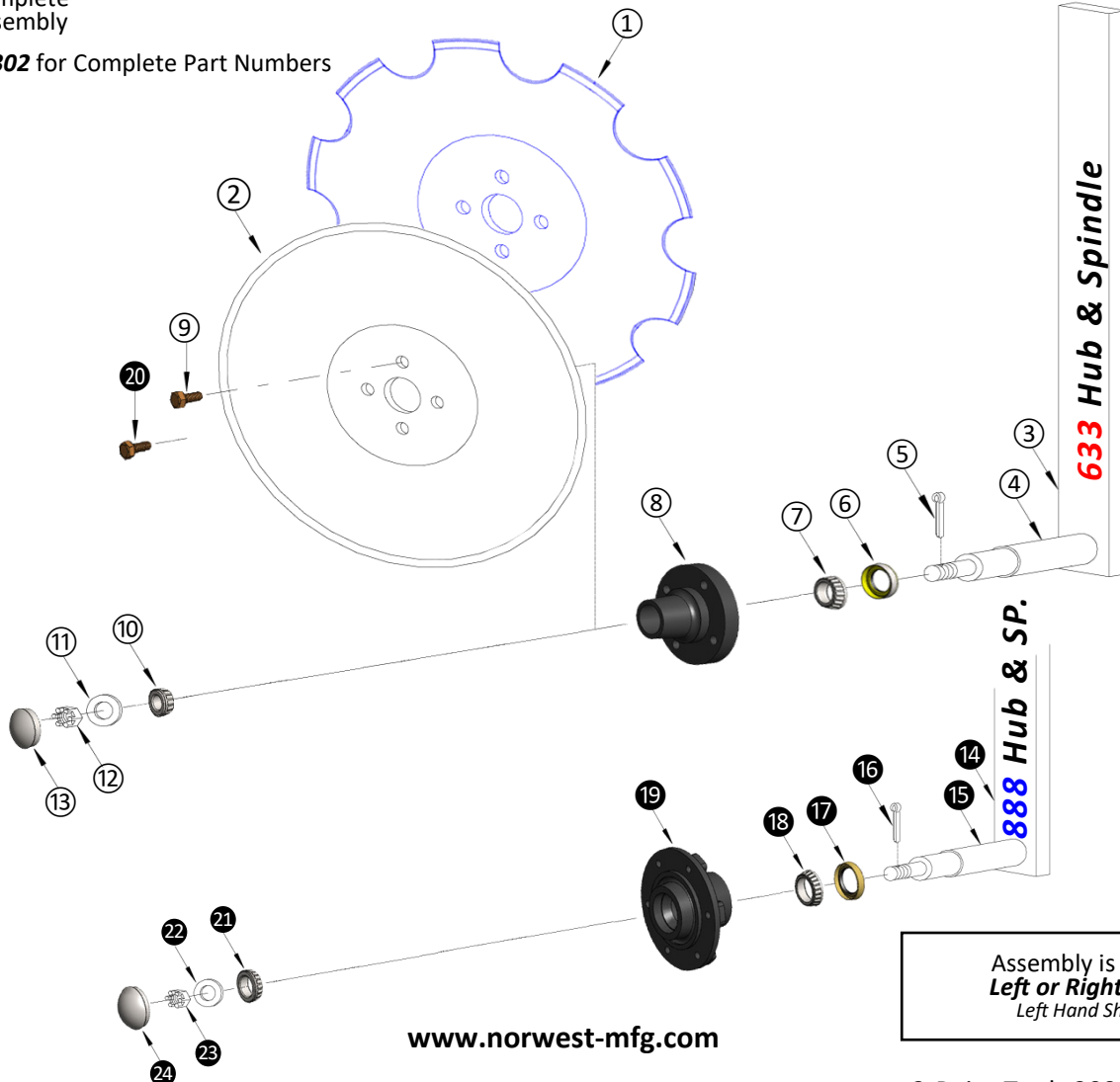
REF. #	DESCRIPTION	PART NUMBER	Industry Standard #	REQ. PCS.	REF. #	DESCRIPTION	PART NUMBER	Industry Standard #	REQ. PCS.
①	Notched Coultter Blade	As Ordered		1	⑬	Dust Cap	909911A	1527	1
②	Smooth Coultter Blade			1	⑭	Straight Leg with 888 Hub & Spindle (For Coultters 30" & Larger only)	G888SL-300H		1
③	Straight Leg with 633 Hub & Spindle	G633SL-580 G633SL-340 G633SL-300		1	⑮	Spindle Complete	GQ-888S	280743	1
④	Spindle Complete	GQ-633S	280741	1	⑯	Cotter Pin	905936	905936	1
⑤	Cotter Pin	905936	905936	1	⑰	Seal	906284	16289	1
⑥	Seal	906296	14975	1	⑱	Inner Bearing	910264	JL69349	1
⑦	Inner Bearing	910259	LM67048	1	⑲	Hub Complete*	GQ-888H	280550	1
⑧	Hub Complete*	GQ-633H	280500	1	⑳	Lug Bolt	943549	943549	6
⑨	Lug Bolt	943549	943549	4	㉑	Outer Bearing	910259	LM67048	1
⑩	Outer Bearing	910260	LM11949	1	㉒	Flat Washer	913683	913683	1
⑪	Flat Washer	913608	913608	1	㉓	Castle Nut	912952	912952	1
⑫	Castle Nut	912954	912954	1	㉔	Dust Cap	909905	1604	1

** See Section 300-Blades: Pages 16 & 17 for Coultter Options • * See Section 200-40 for Hub & Spindle Breakdowns

Complete part numbers come with leg, spindle, blade, and other associated parts (above). Coultters are for moderate to heavy soil applications. Legs are made from heavy duty plow steel. ♦ Please order clamps separately. ♦ For different blade size or thickness, please specify when ordering.

⑫ Complete Assembly

See Pg. 200-302 for Complete Part Numbers



Assembly is Either
Left or Right Hand
Left Hand Shown

www.norwest-mfg.com

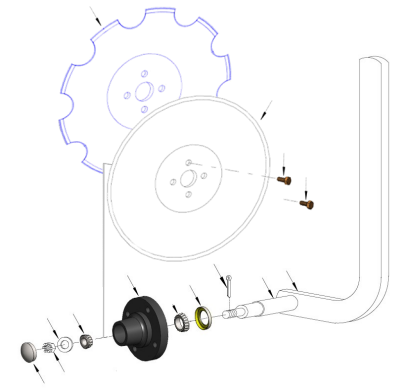
Curved Leg Coulter Assemblies



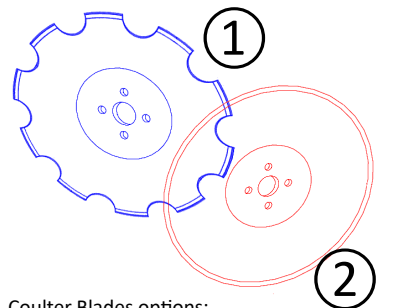
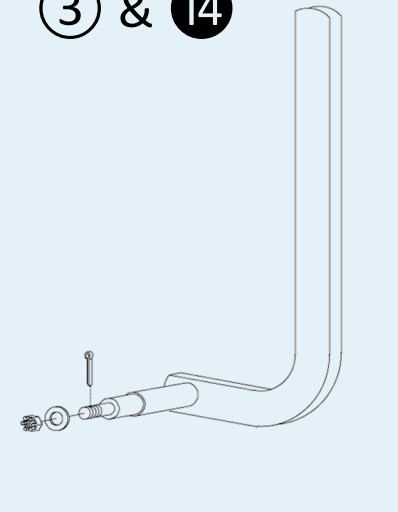
Curved Leg Coulter Blade Series Right & Left Hand Legs: (Suffix) L = Left Hand \diamond R = Right Hand

COMPLETE PART NUMBER ②⑤	DESCRIPTION	LEG W/SPINDLE ONLY (Less Hub & Blade) ③ & ⑭	SPINDLE PART NUMBER	HUB PART NUMBER	BLADE DIAMETER	BLADE PART NUMBER
5/8" x 2" MATERIAL						
G58-S16L	5/8" x 2" x 36" Left	G633LL-580	GQ-633S	GQ-633H	16"	DSR1645
G58-S16R	5/8" x 2" x 36" Right	G633LR-580				DSR16345
G58-S18L	5/8" x 2" x 36" Left	G633LL-580	GQ-633S	GQ-633H	18"	DSR1860
G58-S18R	5/8" x 2" x 36" Right	G633LR-580				DSR1860
G58-S20L	5/8" x 2" x 36" Left	G633LL-580	GQ-633S	GQ-633H	20"	DSR2050
G58-S20R	5/8" x 2" x 36" Right	G633LR-580				DSR2050
G58-S22L	5/8" x 2" x 36" Left	G633LL-580	GQ-633S	GQ-633H	22"	DSR2250
G58-S22R	5/8" x 2" x 36" Right	G633LR-580				DSR2250
3/4" x 2-1/2" MATERIAL						
G34-S16L	3/4" x 2-1/2" x 36" Left	G633LL-340	GQ-633S	GQ-633H	16"	DSR1645
G34-S16R	3/4" x 2-1/2" x 36" Right	G633LR-340				DSR1645
G34-S18L	3/4" x 2-1/2" x 36" Left	G633LL-340	GQ-633S	GQ-633H	18"	DSR1860
G34-S18R	3/4" x 2-1/2" x 36" Right	G633LR-340				DSR1860
G34-S20L	3/4" x 2-1/2" x 36" Left	G633LL-340	GQ-633S	GQ-633H	20"	DSR2050
G34-S20R	3/4" x 2-1/2" x 36" Right	G633LR-340				DSR2050
G34-S22L	3/4" x 2-1/2" x 36" Left	G633LL-340	GQ-633S	GQ-633H	22"	DSR2260
G34-S22R	3/4" x 2-1/2" x 36" Right	G633LR-340				DSR2260
G34-S24L	3/4" x 2-1/2" x 36" Left	G633LL-340	GQ-633S	GQ-633H	24"	DSR2460
G34-S24R	3/4" x 2-1/2" x 36" Right	G633LR-340				DSR2460

②⑤



③ & ⑭



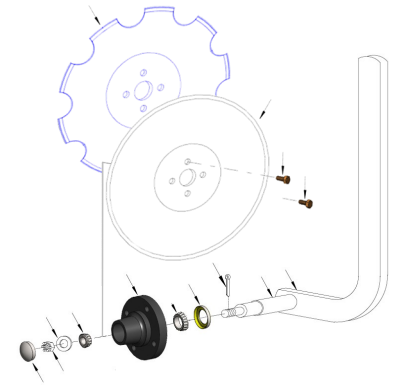
Coulter Blades options:
① = Notched and ② = Smooth

Curved Leg Coulter Blade Series

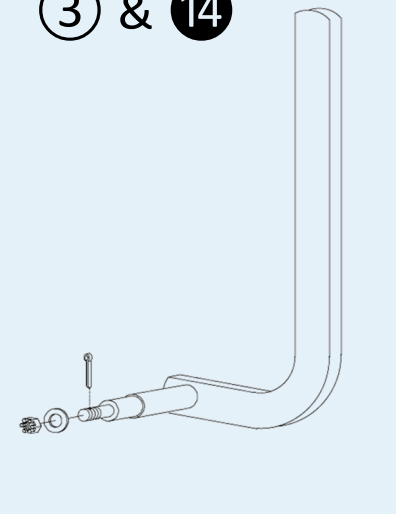
Right & Left Hand Legs: (Suffix) L = Left Hand ◊ R = Right Hand

COMPLETE PART NUMBER 25	DESCRIPTION	LEG W/SPINDLE ONLY (Less Hub & Blade) 3 & 14	SPINDLE PART NUMBER	HUB PART NUMBER	BLADE DIAMETER	BLADE PART NUMBER
1" x 3" MATERIAL						
G1-S16L	1" x 3" x 36" Left	G633LL-300	GQ-633S	GQ-633H	16"	DSR1645
G1-S16R	1" x 3" x 36" Right	G633LR-300				DSR1645
G1-S18L	1" x 3" x 36" Left	G633LL-300	GQ-633S	GQ-633H	18"	DSR1860
G1-S18R	1" x 3" x 36" Right	G633LR-300				DSR1860
G1-S20L	1" x 3" x 36" Left	G633LL-300	GQ-633S	GQ-633H	20"	DSR2050
G1-S20R	1" x 3" x 36" Right	G633LR-300				DSR2050
G1-S22HL	1" x 3" x 36" Left	G633LL-300	GQ-633S	GQ-633H	22"	DSR2250
G1-S22HR	1" x 3" x 36" Right	G633LR-300				DSR2250
G1-S24HL	1" x 3" x 36" Left	G633LL-300	GQ-633S	GQ-633H	24"	DSR2460
G1-S24HR	1" x 3" x 36" Right	G633LR-300				DSR2460
G1-S26HL	1" x 3" x 36" Left	G633LL-300	GQ-633S	GQ-633H	26"	DSR2680
G1-S26HR	1" x 3" x 36" Right	G633LR-300				DSR2680
G1-S28HL	1" x 3" x 36" Left	G633LL-300	GQ-633S	GQ-633H	28"	DSR2880
G1-S28HR	1" x 3" x 36" Right	G633LR-300				DSR2880
G1-S30HL	1" x 3" x 36" Left	G888LL-300H	GQ-888S	GQ-888H	30"	DSR3080
G1-S30HR	1" x 3" x 36" Right	G888LR-300H				DSR3080

25

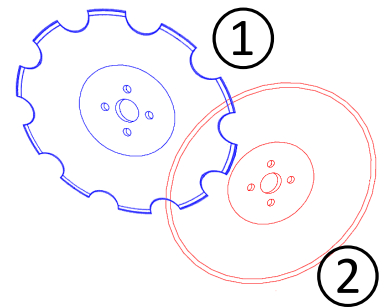


3 & 14



1

2



Coulter Blades options:
1 = Notched and 2 = Smooth

Please Note: Blades 30" & larger will be made with a heavier hub (GQ-888H) & spindle (GQ-888S).

Complete part numbers come with leg, spindle, blade, and other associated parts (Pg. 200-306).
 Coulters are for moderate to heavy soil applications. Legs are made from heavy duty plow steel. ◊ Please order clamps separately. ◊
 For different blade size or thickness, please specify when ordering.
 The last letter of the part number indicates either right hand (R) or left hand (L).

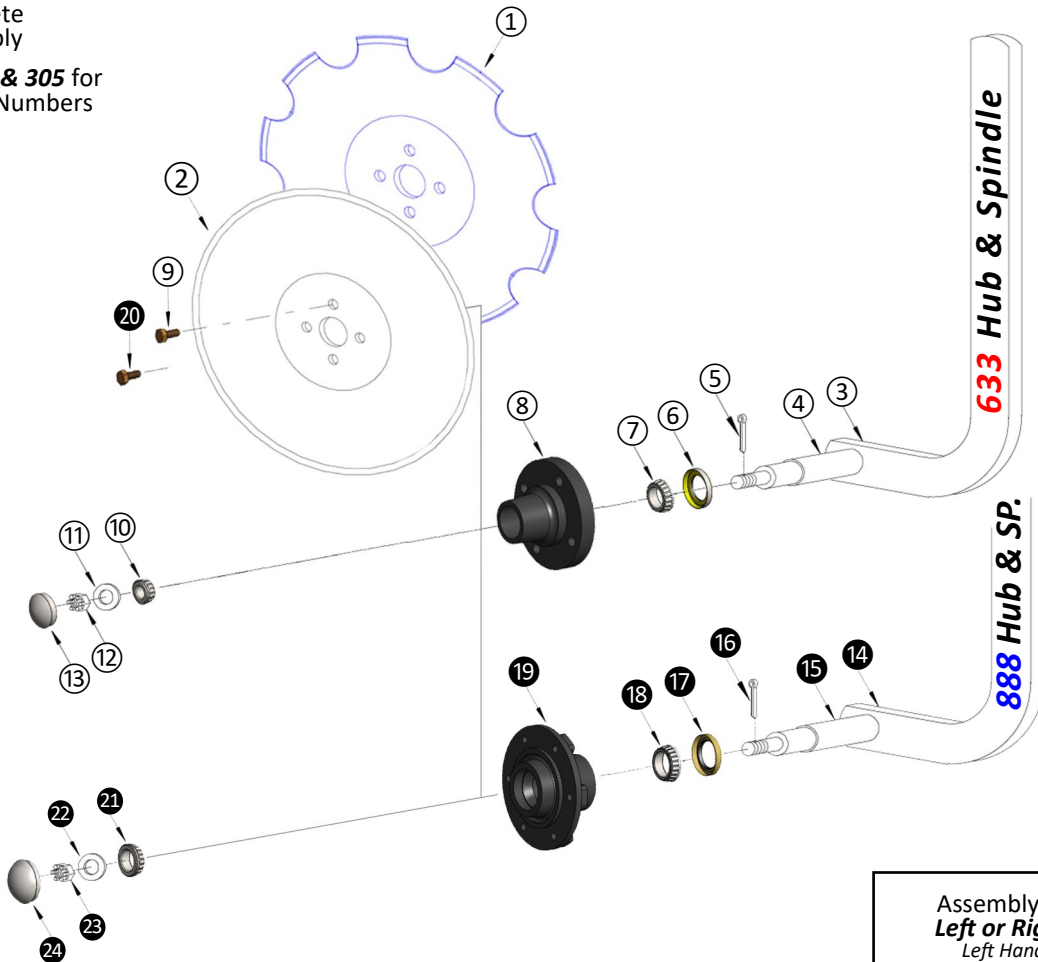
Curved Leg Coulters Blade Series with 633 Hub & Spindle or 888 Hub & Spindle Component Parts List

REF. #	DESCRIPTION	PART NUMBER	Industry Standard #	REQ. PCS.	REF. #	DESCRIPTION	PART NUMBER	Industry Standard #	REQ. PCS.
①	Notched Coulters Blade	As Ordered		1	⑬	Dust Cap	909911A	1527	1
②	Smooth Coulters Blade			1	⑭	Curved Leg with 888 Hub & Spindle (For Coulters 30" & Larger only)	G888LL-300H G888LR-300H		1
③	Curved Leg with 633 Hub & Spindle	G633LL/LR-580 G633LL/LR-340 G633LL/LR-300		1	⑮	Spindle Complete	GQ-888S	280743	1
④	Spindle Complete	GQ-633S	280741	1	⑯	Cotter Pin	905936	905936	1
⑤	Cotter Pin	905936	905936	1	⑰	Seal	906284	16289	1
⑥	Seal	906296	14975	1	⑱	Inner Bearing	910264	JL69349	1
⑦	Inner Bearing	910259	LM67048	1	⑲	Hub Complete*	GQ-888H	280550	1
⑧	Hub Complete*	GQ-633H	280500	1	⑳	Lug Bolt	943549	943549	6
⑨	Lug Bolt	943549	943549	4	㉑	Outer Bearing	910259	LM67048	1
⑩	Outer Bearing	910260	LM11949	1	㉒	Flat Washer	913683	913683	1
⑪	Flat Washer	913608	913608	1	㉓	Castle Nut	912952	912952	1
⑫	Castle Nut	912954	912954	1	㉔	Dust Cap	909905	1604	1

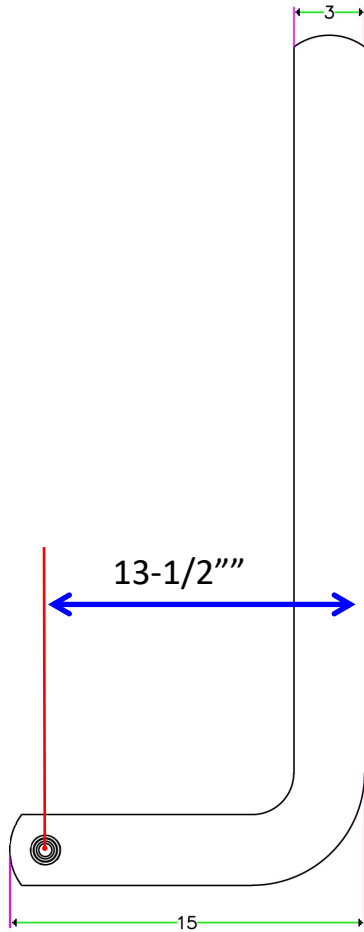
** See Section 300-Blades: Pages 16 & 17 for Coulters Options • * See Section 200-40 for Hub & Spindle Breakdowns

Complete part numbers come with leg, spindle, blade, and other associated parts (above). Coulters are for moderate to heavy soil applications. Legs are made from heavy duty plow steel. ♦ Please order clamps separately. ♦ For different blade size or thickness, please specify when ordering.

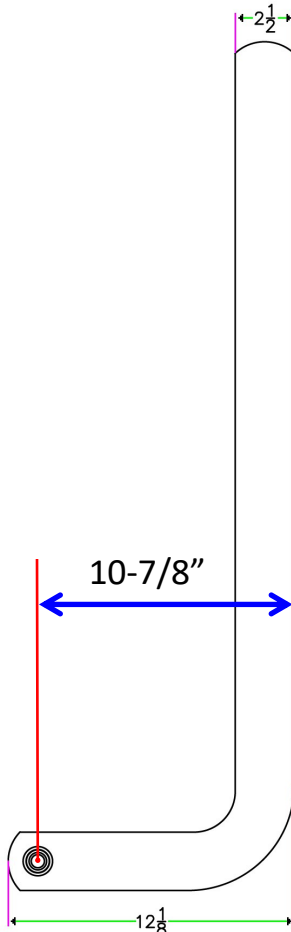
⑫⑤ Complete Assembly
See Pg. 200-304 & 305 for Complete Part Numbers



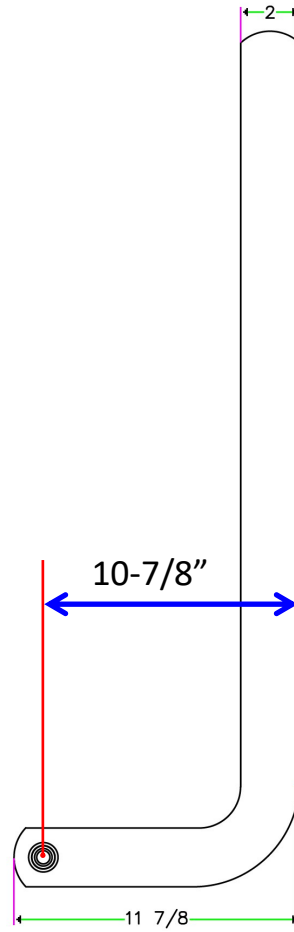
Curved Legs for Coulter Assemblies



G1LL-300
1" X 3"



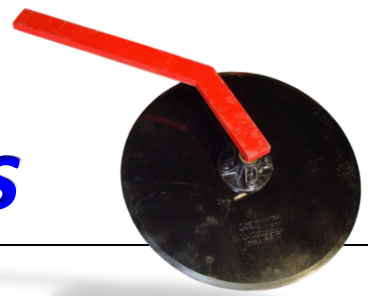
G1LL-340
3/4" X 2-1/2"



G1LL-580
5/8" X 2"



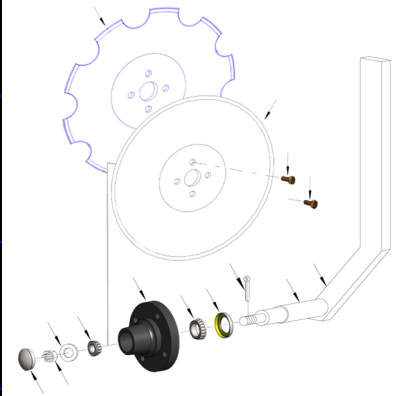
45° Angle Leg Coulter Assemblies



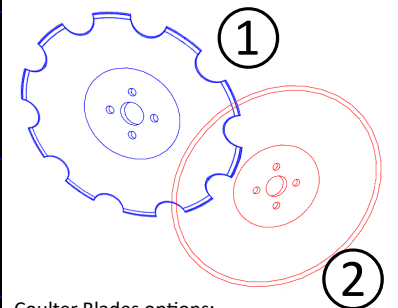
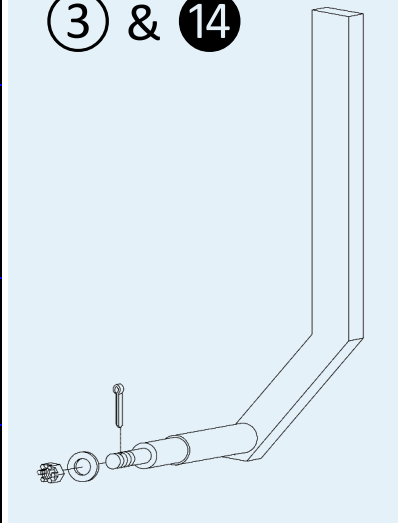
45° Angle Leg Coulter Blade Series Right & Left Hand Legs: (Suffix) L = Left Hand ◊ R = Right Hand

COMPLETE PART NUMBER ⑫	DESCRIPTION	LEG W/SPINDLE ONLY (Less Hub & Blade) ⑬ & ⑭	SPINDLE PART NUMBER	HUB PART NUMBER	BLADE DIAMETER	BLADE PART NUMBER
5/8" x 2" MATERIAL						
G58X-S16L	5/8" x 2" x 30" Left	G633XL-580	GQ-633S	GQ-633H	16"	DSR1645
G58X-S16R	5/8" x 2" x 30" Right	G633XR-580				DSR1645
G58X-S18L	5/8" x 2" x 30" Left	G633XL-580	GQ-633S	GQ-633H	18"	DSR1860
G58X-S18R	5/8" x 2" x 30" Right	G633XR-580				DSR1860
G58X-S20L	5/8" x 2" x 30" Left	G633XL-580	GQ-633S	GQ-633H	20"	DSR2050
G58X-S20R	5/8" x 2" x 30" Right	G633XR-580				DSR2050
G58X-S22L	5/8" x 2" x 30" Left	G633XL-580	GQ-633S	GQ-633H	22"	DSR2250
G58X-S22R	5/8" x 2" x 30" Right	G633XR-580				DSR2250
3/4" x 2-1/2" MATERIAL						
G34X-S16L	3/4" x 2-1/2" x 30" Left	G633XL-340	GQ-633S	GQ-633H	16"	DSR1645
G34X-S16R	3/4" x 2-1/2" x 30" Right	G633XR-340				DSR1645
G34X-S18L	3/4" x 2-1/2" x 30" Left	G633XL-340	GQ-633S	GQ-633H	18"	DSR1860
G34X-S18R	3/4" x 2-1/2" x 30" Right	G633XR-340				DSR1860
G34X-S20L	3/4" x 2-1/2" x 30" Left	G633XL-340	GQ-633S	GQ-633H	20"	DSR2050
G34X-S20R	3/4" x 2-1/2" x 30" Right	G633XR-340				DSR2050
G34X-S22L	3/4" x 2-1/2" x 30" Left	G633XL-340	GQ-633S	GQ-633H	22"	DSR2260
G34X-S22R	3/4" x 2-1/2" x 30" Right	G633XR-340				DSR2260
G34X-S24L	3/4" x 2-1/2" x 30" Left	G633XL-340	GQ-633S	GQ-633H	24"	DSR2460
G34X-S24R	3/4" x 2-1/2" x 30" Right	G633XR-340				DSR2460

⑮



⑬ & ⑭



Coulter Blades options:
① = Notched and ② = Smooth

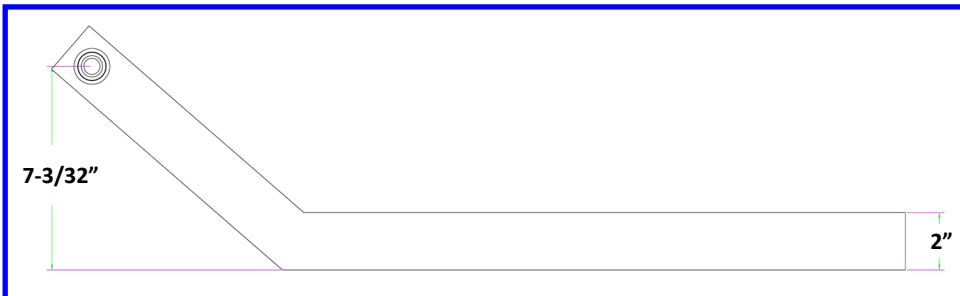
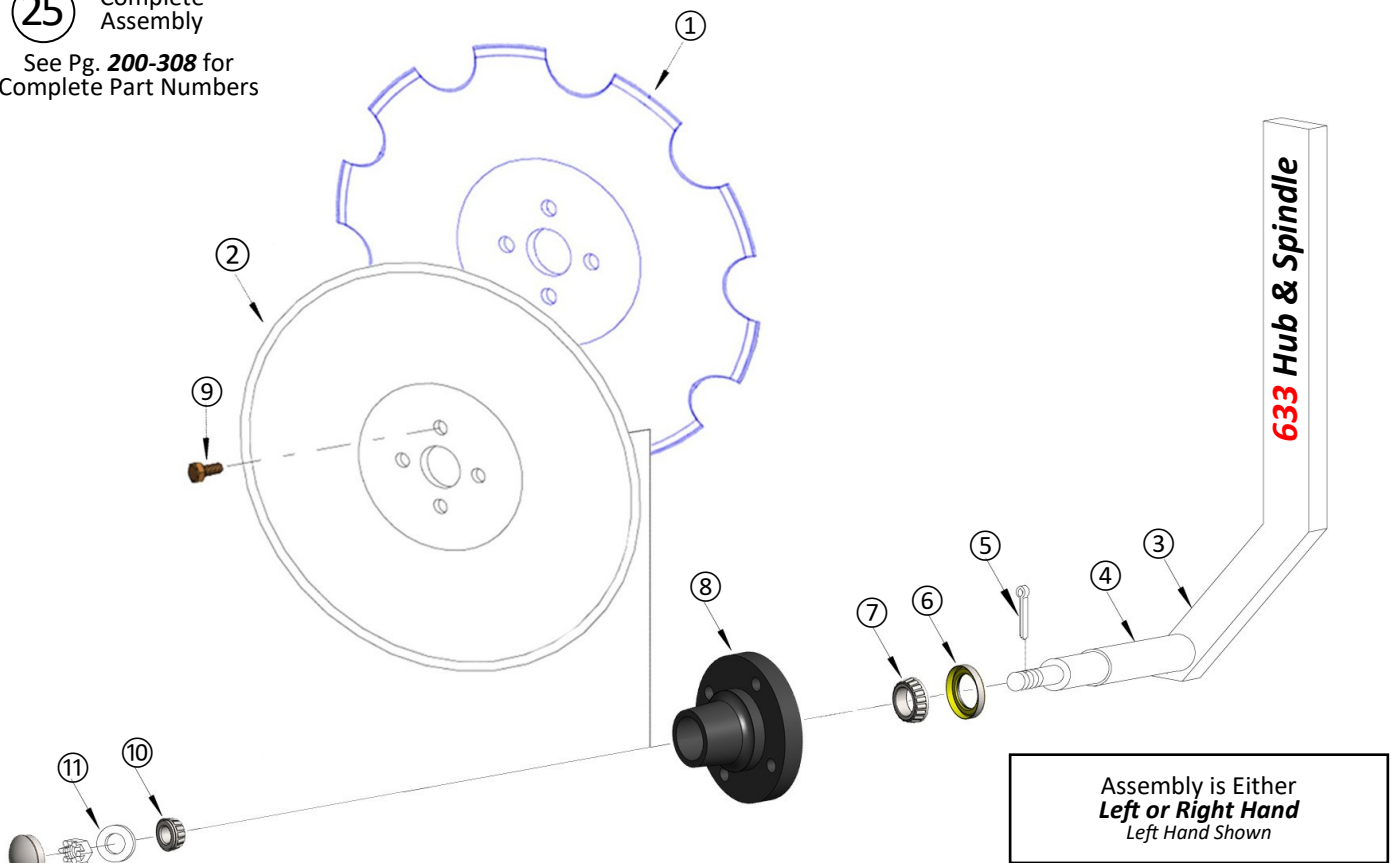
45° Angle Leg Coultter Blade Series with 633 Hub & Spindle Component Parts List

REF. #	DESCRIPTION	PART NUMBER	INDUSTRY STANDARD #	REQ. PCS.	REF. #	DESCRIPTION	PART NUMBER	INDUSTRY STANDARD #	REQ. PCS.
①	Notched Coultter Blade	** Prefix: DNR		1	⑧	Hub Complete*	GQ-633H	280500	1
②	Smooth Coultter Blade	** Prefix: DSR		1	⑨	Lug Bolt	943549	943549	4
③	45° Angle Leg with 633 Hub & Spindle	G633XL/XR-580 G633XL/XR-340		1	⑩	Outer Bearing	910260	LM11949	1
④	Spindle Complete	GQ-633S	280741	1	⑪	Flat Washer	913608	913608	1
⑤	Cotter Pin	905936	905936	1	⑫	Castle Nut	912954	912954	1
⑥	Seal	906296	14975	1	⑬	Dust Cap	909911A	1527	1
⑦	Inner Bearing	910259	LM67048	1					

** See Section 300-Blades: Pages 16 & 17 for Coultter Options • * See Section 200-40 for Hub & Spindle Breakdowns

Complete part numbers come with leg, spindle, blade, and other associated parts (above). Coultters are for moderate to heavy soil applications. Legs are made from heavy duty plow steel. ♦ Please order clamps separately. ♦ For different blade size or thickness, please specify when ordering.

②⑤ Complete Assembly
See Pg. 200-308 for Complete Part Numbers



Stabilizer Coulters

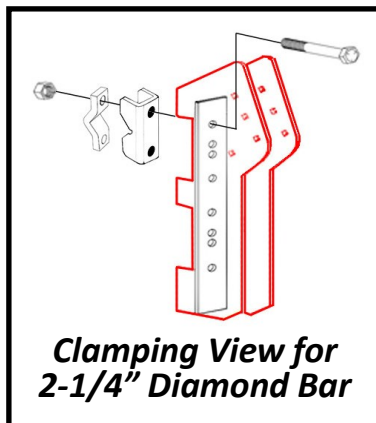
G3V-10FB



NORWEST PART NUMBER	DESCRIPTION	COULTER BLADE SIZE
G3V-10FB	Norwest Single Leg Style Vine Cutter/Stabilizer Coulters for all Flat Bars & 2-1/4" Diamond Bars. <i>Mounting Hardware Sold Separately Please Specify Bar Size When Ordering</i>	20"
		24"
		26"
		28"

REF. #	Description	Norwest Part #	INDUSTRY STANDARD #	REQ. PCS	REF. #	Description	Norwest Part #	REQ. PCS
①	1" x 3" Leg	G3VL-100		1	⑯	1/2" Hex Nut	FHN12	5
②	633 Spindle Complete*	GQ-633S	280741	1	⑰	Mounting Body	G4B-200	1
③	Seal	906296	14975	1	⑱	3/4" Pipe Brace for Mounting Body (3-1/2" Long)	G4V-BRACE	1
④	Inner Bearing	910259	LM67048	1	⑲	1/2" x 5" Gr. 5 Hex Bolt	FHB12500G5	1
⑤	633 Hub Complete*	GQ-633H	280500	1	⑳	Trunnion Bracket	G4V-312	2
⑥	Lug Bolt	943549	943549	4	㉑	1/2" x 1-1/2" Gr. 5 Carriage Bolt	FCB12150G5	4
⑦	Outer Bearing	910260	LM11949	1	㉒	Vine Cutter Rod	G4V-317	1
⑧	Flat Washer	913608	913608	1	㉓	Cylinder Pin	10202	1
⑨	Castle Nut	912954	912954	1	㉔	Trip Spring (19" Long)	16-35814L	1
⑩	Cotter Pin	905936	905936	1	㉕	Cap for Trip Spring	G4V-318	1
⑪	Dust Cap	909911A (Low Profile)	1527	1	㉖	Trunnion	G4V-811	1
⑫	Smooth Coulters Blade	DSR2050-00; DSR2460-00; DSR2680-00; DSRT2875-00		1	㉗	1" Flat Washer	FFW100	2
⑬	1" x 7" Gr. 5 Hex Bolt	FHB100700G5		1	㉘	Rubber Buffer	G4V-315	1
⑭	1" Nylok Hex Nut	FYHN100		2	㉙	1" Jam Nut	FJN100	1
⑮	1/2" Lock Washer	FLW12		5	G3V-10FB BREAKDOWN ON PAGE 200-311			

** See Section 300-Blades: Pages 16 & 17 for Coulters Options • * See Section 200-40 for Hub & Spindle Breakdowns

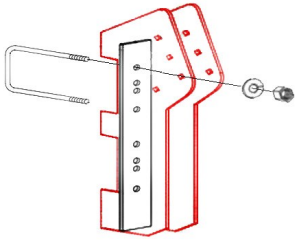


APPLICATIONS UTILIZE 20" to 30" RIGID COULTERS.
PLEASE SPECIFY BLADE SIZE WHEN ORDERING.

WHEN ORDERING FOR USE WITH A 2-1/4" DIAMOND BAR:
706 BAR CAPS, 342S STRAPS & FHB78700G5 (7/8" X 7" HEX BOLTS)
ARE USED TO MOUNT TO BAR.

U-BOLTS, FASTENERS, BAR CAPS & STRAPS ARE SOLD SEPARATELY FOR BAR SIZE.

www.norwest-mfg.com



Clamping View for Flat Bar

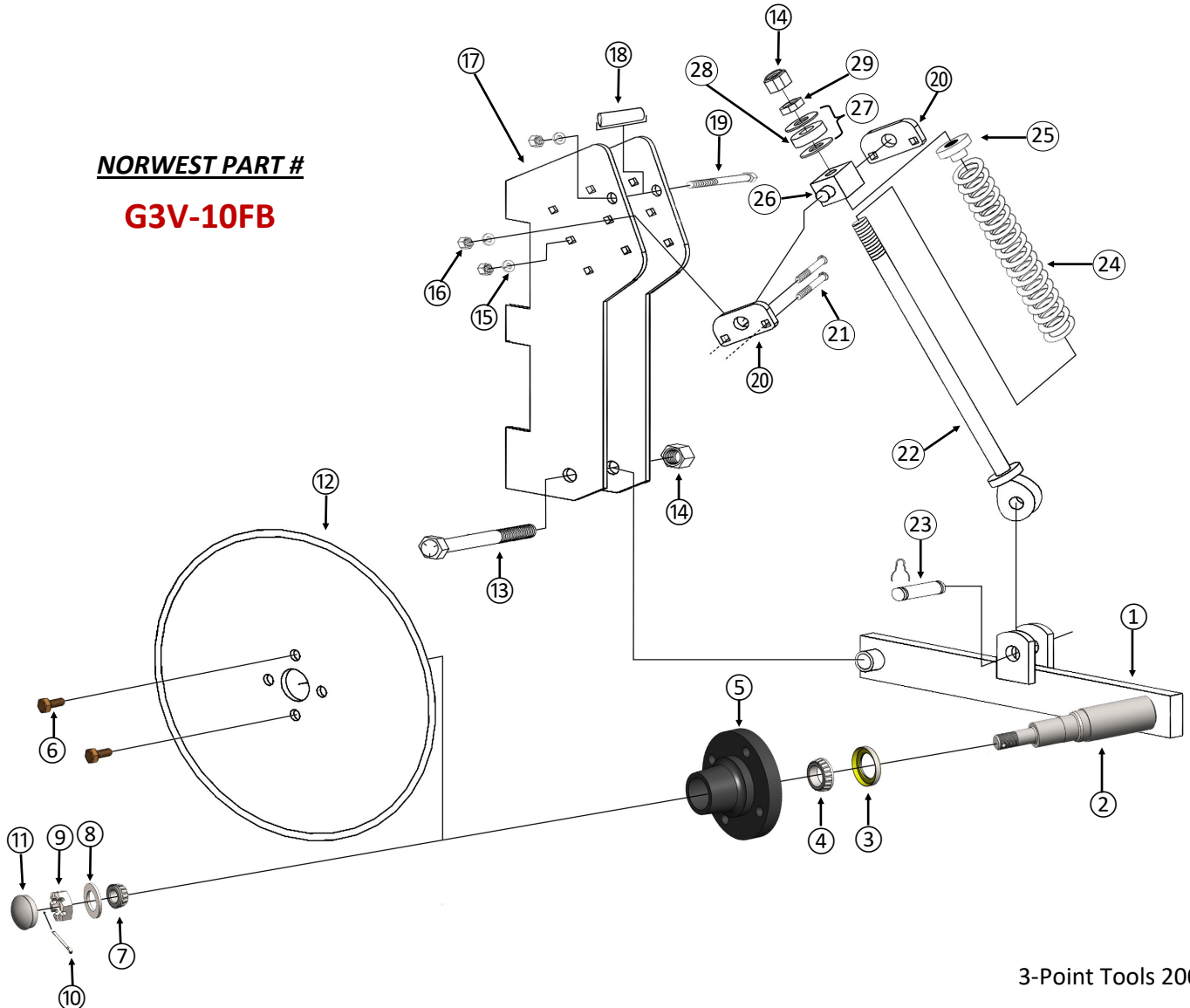
APPLICATIONS UTILIZE 20" to 30" RIGID COULTERS.
PLEASE SPECIFY BLADE SIZE WHEN ORDERING.

WHEN ORDERING FOR USE WITH A FLAT BAR:
Please give the **Vertical** (↕) measurement, then **Horizontal** (↔) measurement.

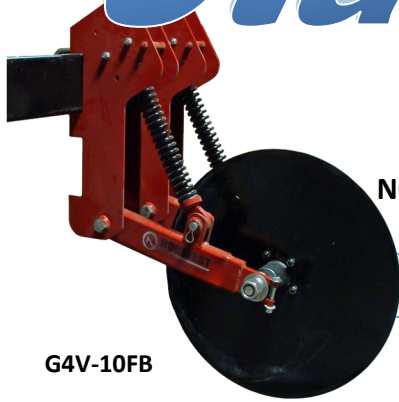
U-BOLTS, FASTENERS, BAR CAPS & STRAPS ARE SOLD SEPARATELY FOR BAR SIZE.

TOOL BAR SIZE		U-BOLT	HEX BOLT	LOCK WASHER	NUT	STRAP
VERTICAL	HORIZONTAL					
4"	4"	FUB4060-78	N/A	FLW78	FHN78	N/A
4"	6"	N/A	FHB78900G5	FLW78	FHN78	40S
5"	7"	N/A	FHB781000G5	FLW78	FHN78	50S
6"	6"	N/A	FHB78900G5	FLW78	FHN78	60S
6"	8"	N/A	FHB78900G5	FLW78	FHN78	60S
7"	5"	16-00204	N/A	FLW78	FHN78	N/A
7"	7"	16-03204	N/A	FLW78	FHN78	N/A
2-1/4" \diamond BAR		N/A	FHB78700G5	FLW78	FHN78	706-Cap / 342S

NORWEST PART #
G3V-10FB



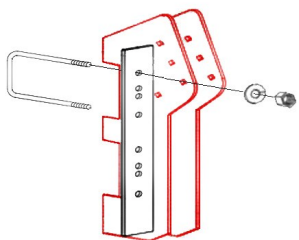
Stabilizer Coulters



G4V-10FB

NORWEST PART NUMBER	DESCRIPTION	COULTER BLADE SIZE
G4V-10FB	Norwest Heavy Duty Yoke Style Vine Cutter/Stabilizer Coulters for all Flat Bars.	28"
G4V-10FB30	<i>Mounting Hardware Sold Separately Please Specify Bar Size When Ordering</i>	30"

REF. #	Description	Norwest Part #	INDUSTRY STANDARD #	REQ. PCS	REF. #	Description	Norwest Part #	REQ. PCS
①	1" x 3" Left & Right Hand Leg	GVL-100		2	⑩	Mounting Body	G4B-200	2
②	1/2" x 4" Gr. 5 Hex Bolt	FHB12400G5		2	⑪	3/4" Pipe Brace for Mounting Body (3-1/2" Long)	G4V-BRACE	2
③	1-3/8" Hex Nut	FHN138		2	⑫	1/2" x 5" Gr. 5 Hex Bolt	FHB12500G5	2
④	1-3/8" Lock Washer	FLW138		2	⑬	1" x 7" Gr. 5 Hex Bolt	FHB100700G5	2
⑤	1-3/8" Flat Washer	FFW138		6	⑭	Trunnion Bracket	G4V-312	4
⑥	1-3/8" Jam Nut	FJN138		4	⑮	1/2" x 1-1/2" Gr. 5 Carriage Bolt	FCB12150G5	8
⑦	Inner/Outer Seal	906295	17617	2	⑯	Vine Cutter Rod	G4V-317	2
⑧	Inner/Outer Bearing	910270	14136A	2	⑰	Cylinder Pin	10202	2
⑨	G4 Spindle (1-3/8" Dia.)	G4-SP1N	281370	1	⑱	Trip Spring (19" Long)	16-35814L	2
⑩	G4 Hub Complete* (5" Bolt on 5-1/2" Bolt Center)	G4-HUB	281088	1	⑲	Cap for Trip Spring	G4V-318	2
⑪	Smooth Coulters Blade	DSRT2875-00; DSRT3075-00		1	⑳	Trunnion	G4V-811	2
⑫	Lug Nuts	912919	912919	5	㉑	1" Flat Washer	FFW100	4
⑬	1" Nylok Hex Nut	FYHN100		4	㉒	Rubber Buffer	G4V-315	2
⑭	1/2" Lock Washer	FLW12		12	㉓	1" Jam Nut	FJN100	2
⑮	1/2" Hex Nut	FHN12		12	G4V-10FB BREAKDOWN ON PAGE 200-313			
** See Section 300-Blades: Pages 16 & 17 for Coulters Options • * See Section 200-40 for Hub & Spindle Breakdowns								



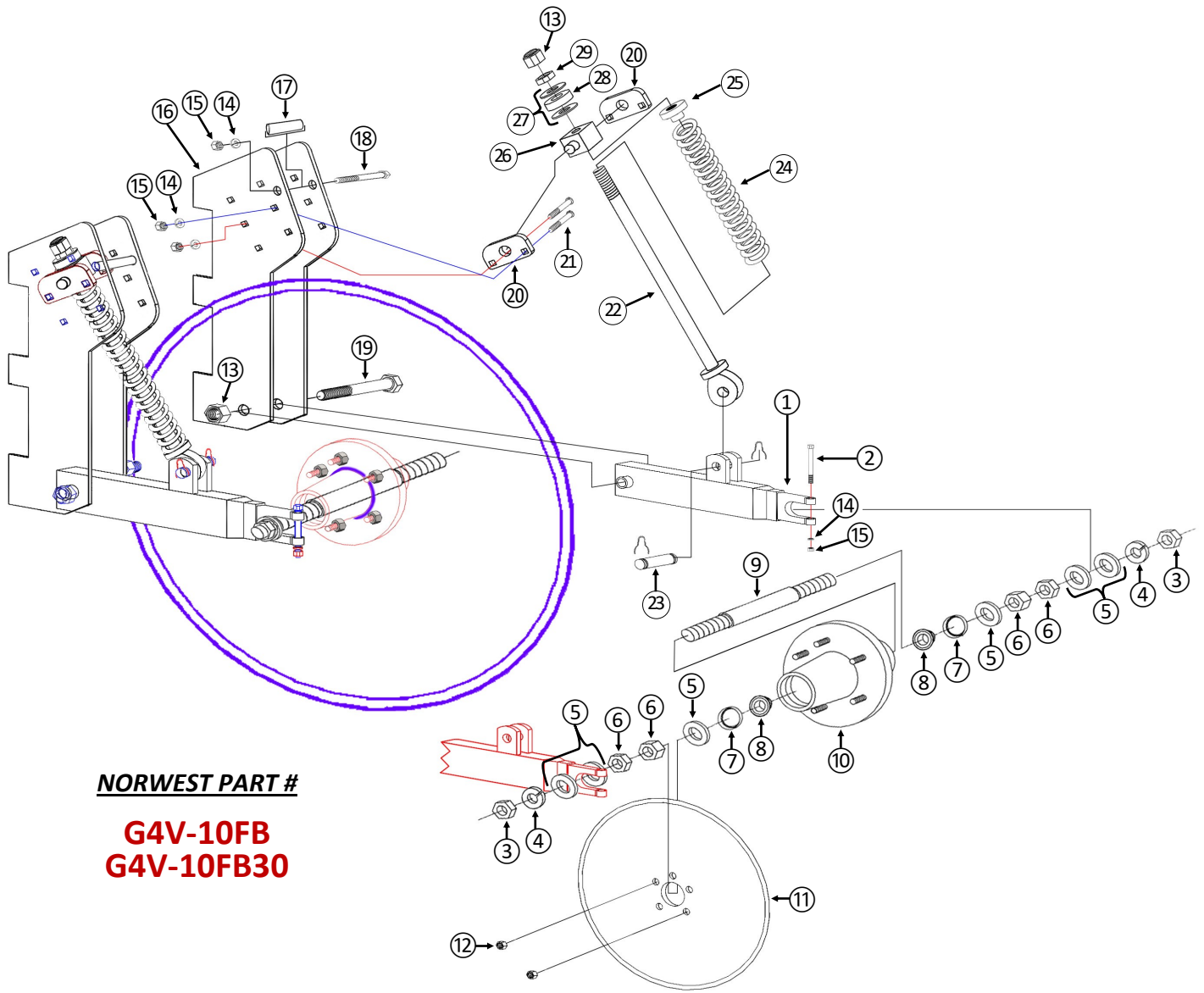
Clamping View for Flat Bar

APPLICATIONS UTILIZE 28" and 30" RIGID COULTERS.
PLEASE SPECIFY BLADE SIZE WHEN ORDERING.

WHEN ORDERING FOR USE WITH A FLAT BAR:
Please give the **Vertical** (↕) measurement, then **Horizontal** (↔) measurement.

U-BOLTS, FASTENERS, BAR CAPS & STRAPS ARE SOLD SEPARATELY FOR BAR SIZE.

www.norwest-mfg.com




NORWEST PART #

**G4V-10FB
G4V-10FB30**

TOOL BAR SIZE		U-BOLT	HEX BOLT	LOCK WASHER	NUT	STRAP
VERTICAL	HORIZONTAL					
4"	4"	FUB4060-78	N/A	FLW78	FHN78	N/A
4"	6"	N/A	FHB78900G5	FLW78	FHN78	40S
5"	7"	N/A	FHB781000G5	FLW78	FHN78	50S
6"	6"	N/A	FHB78900G5	FLW78	FHN78	60S
6"	8"	N/A	FHB78900G5	FLW78	FHN78	60S
7"	5"	16-00204	N/A	FLW78	FHN78	N/A
7"	7"	16-03204	N/A	FLW78	FHN78	N/A

www.norwest-mfg.com



Stabilizer Coulters

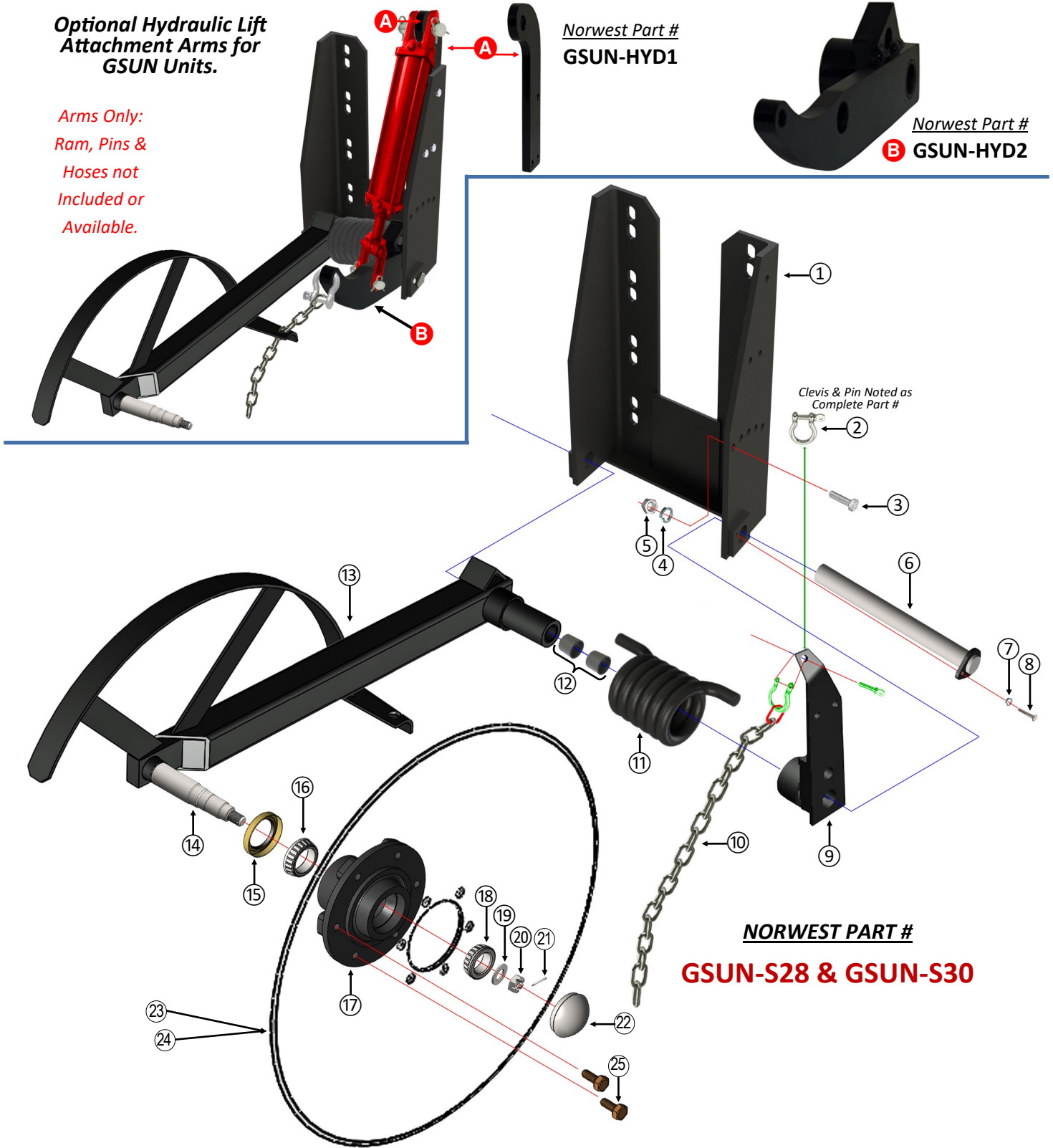
NORWEST PART	DESCRIPTION	COULTER BLADE SIZE
GSUN-S28	Norwest Guidance Coulters with 888 Hub & Spindle and Heavy Duty Tension Spring	28"
GSUN-S30	<i>Mounting Hardware Sold Separately Please Specify Bar Size When Ordering</i>	30"

Reference Number	Description	Norwest Part Number	INDUSTRY STANDARD NUMBER	Required Pcs.
①	Clamp Bracket Less U-Bolts	GSUN-200		1
②	Chain Clevis	5/16" CLEVIS		1
③	1/2" x 1-1/2" Gr. 5 Hex Bolt	FHB12150G5		1
④	1/2" Lock Washer	FLW12		1
⑤	1/2" Hex Nut	FHN12		1
⑥	Pivot Shaft	GSUN-100S		1
⑦	1/4" Lock Washer	FLW14		1
⑧	1/4" x 1" Hex Bolt Gr. 5	FHB14100G5		1
⑨	Adjustable Tension Arm	GSUN-TA		1
⑩	5/16" Grade 70 Chain	5/16" CHAIN		1.75 FT.
⑪	Torsion Spring	GSUN-814		1
⑫	Replaceable Nylatron or MRP Bushing	Z-NYLATRON		2
⑬	Vine Cutter Leg	GSUN-100		1
⑭	1-3/4" x 13" Spindle Complete*	GQ-888S	280743	1
⑮	Seal for 888 Hub	906284	16289	1
⑯	Inner Bearing for 888 Hub	910264	JL69349	1
⑰	6 on 6" Bolt Center Hub Complete*	GQ-888H	280550	1
⑱	Outer Bearing for 888 Hub	910259	LM67048	1
⑲	Flat Washer	913683	913683	1
⑳	Castle Nut	912952	912952	1
㉑	Cotter Pin	905936	905936	1
㉒	Dust Cap for 888 Hub	909905	1604	1
㉓	Smooth Coulters Blade 28" x7.5mm (Complete Part #: GSUN-S28)	DSRT2875-00		1
㉔	Smooth Coulters Blade 30" x7.5mm (Complete Part #: GSUN-S30)	DSRT3075-00		1
㉕	Lug Bolts for 888 Hub	943549		6
OPTIONAL HYDRAULIC LIFT ATTACHMENT FOR GSUN UNITS BRACKETS ONLY: Hydraulic Ram/Hoses not Included or Available				
A	Upper hydraulic arm for GSUN lift assist - Less Bolts	GSUN-HYD1		1
B	Lower hydraulic arm for GSUN lift assist w/Z-NYLATRON bushing	GSUN-HYD2		1
GSUN-S28 & GSUN-S30 BREAKDOWN ON PAGE 200-315				
** See Section 300-Blades for Coulters Options • * See Section 200-40 for Hub & Spindle Breakdowns				

TOOL BAR SIZE		U-BOLT	HEX BOLT	LOCK WASHER	NUT	STRAP
VERTICAL	HORIZONTAL					
4"	4"	FUB4060-58	N/A	FLW58	FHN58	N/A
4"	6"	FUB4090-58	N/A	FLW58	FHN58	N/A
7"	7"	FUB7010-58	N/A	FLW58	FHN58	N/A
2-1/4" Ø BAR		N/A	FHB58600G5	FLW58	FHN58	107040 - Cap 582S - Strap

Optional Hydraulic Lift Attachment Arms for GSUN Units.

*Arms Only:
Ram, Pins &
Hoses not
Included or
Available.*





N347-4SL Shown

Spring Coultter

NORWEST PART #	DESCRIPTION	Leg
N347-4SL	Norwest Spring Coultter with Straight Leg; Less Clamp	NW343-21
N347-4OL	Norwest Spring Coultter with Offset Leg; Less Clamp	NW345-23
N347-4SL1x3	Norwest Spring Coultter with 1" x 3" x 34" Straight Shank	NW345-24

Mounting Hardware Sold Separately Please Specify Bar Size When Ordering

Reference Number	Description	Norwest Part Number	Required Pcs.
①	1-1/2" Straight Coultter Shaft (Round)	NW343-21	1
②	1-1/2" Offset Coultter Shaft (Round)	NW345-23	
③	1" x 3" x 34" Straight Shank w/ 1-1/2" Round for Spring Coultter	NW343-24	1
④	Norwest Hinge Casting	NW347-06	1
⑤	1-1/4" x 10 Gauge SAE Flat Washer	FFW125SAE	1
⑥	Smooth Rigid/Fluted Blade	DSS2045-00	1
⑦	Lug Bolt for 633 Hub	943549	4
⑧	3/4" Nylok	FYHN34	1
⑨	Steel Pull Spring Bushing (Outer)	NW347-08	1
⑩	Cultivator Compression Spring for Reset Spring Units	16-35814	1
⑪	Steel Pull Spring Bushing (Inner)	NW347-08A	1
⑫	1-1/4", 18 Gauge Flat Washer	NWFTS2028	1
⑬	NYLATRON or MRP Bushing	Z-NYLATRON	2
⑭	633 Hub Complete. 1500# Capacity w/ 4 Bolt on 5" Bolt Centers & 3.62" Pilot Hole	GQ-633H <i>Industry Standard # 280500</i>	1
⑮	633 Spindle Complete for GQ-633H 1-5/8" Diameter	GQ-633S <i>Industry Standard # 280741</i>	1
⑯	Swing arm w/ GQ-633S Spindle; Less Hub	NW347-4	1
⑰	3/4" Hex Nut	FHN34	1
⑱	3/4" Lock Washer	FLW34	1
⑲	3/16" x 2" Cotter Pin for NW347-4 (HH60110)	FPC505-12	1
⑳	Locking Collar - Cast	NW347-18	1
㉑	5/8" x 1-1/4" Square Head Set Screw	FSHSS58125	1
㉒	Spring Coultter Tension Rod	NW347-15	1
㉓	3/4" Hex Crimp Lock Nut for Spring Coultter	FHLN34	2
㉔	3/4" Flat Washer SAE for Spring Coultter	FFW34SAE	2
㉕	3/4" x 3" Hex Bolt - Grade 5	FHB34300G5	1
㉖	5/16" x 3" for Spring Coultter (61296)	FPR0612-22	1
㉗	5/16" x 3" Cotter Pin (60151)	FPC510-20	1

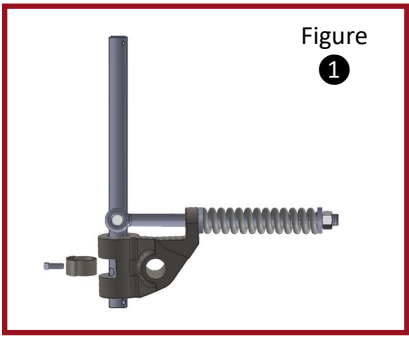
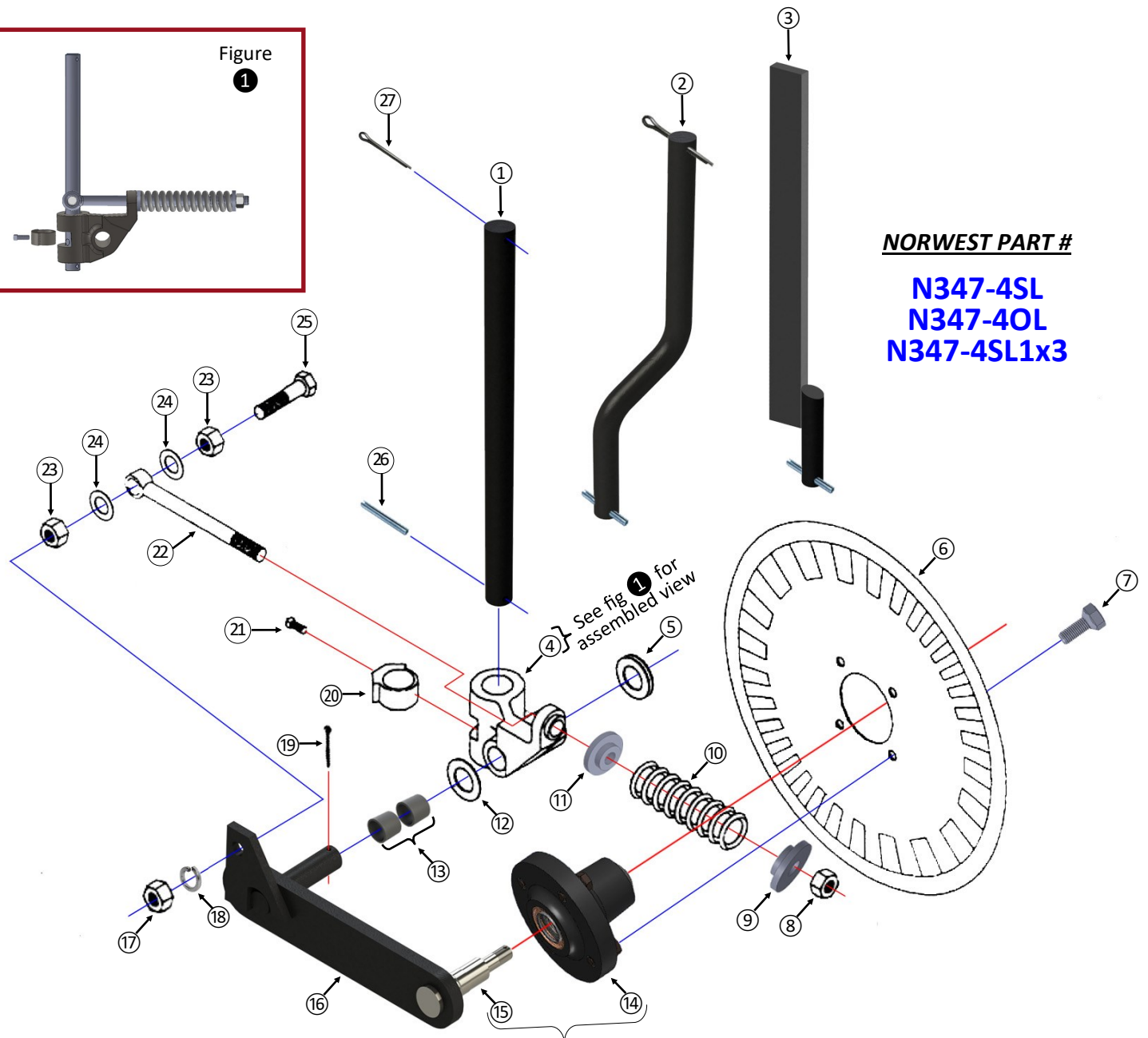


Figure 1



NORWEST PART #

**N347-4SL
N347-4OL
N347-4SL1x3**

(See fig. 2 for Hub & Spindle breakdown)

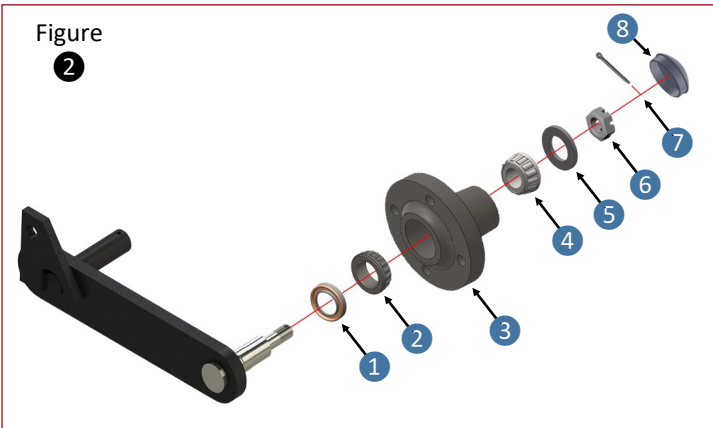



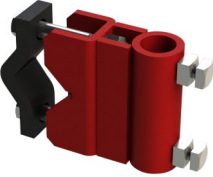
Figure 2

Reference Number	Description	Norwest Part #	Industry Standard #	Required Pcs.
1	Triple Lip Seal for Spring Coupler	NW40-3	POS1502339UB-S (P)	1
2	Inner Bearing	910259	LM67048	1
3	Hub Complete*	GQ-633H	280500	1
4	Outer Bearing	910260	LM11949	1
5	Flat Washer	913608	913608	1
6	Castle Nut	912954	912954	1
7	Cotter Pin	905936	905936	1
8	Dust Cap	909911A	1527	1

* See Section 200-40 for more Hub & Spindle Breakdowns



Spring Coultter

PART	NORWEST PART NUMBER	FOR USE WITH SHANK (S)	TOOL BAR SIZE
	NW347-44	NW343-21 1-1/2" O SHAFT NW345-23 1-1/2" O SHAFT	4" X 4" TOOL BAR
	NW347-D	NW343-21 1-1/2" O SHAFT NW345-23 1-1/2" O SHAFT	2-1/4" ◇ BAR

ALSO AVAILABLE for NORWEST SPRING COULTER ASSEMBLIES



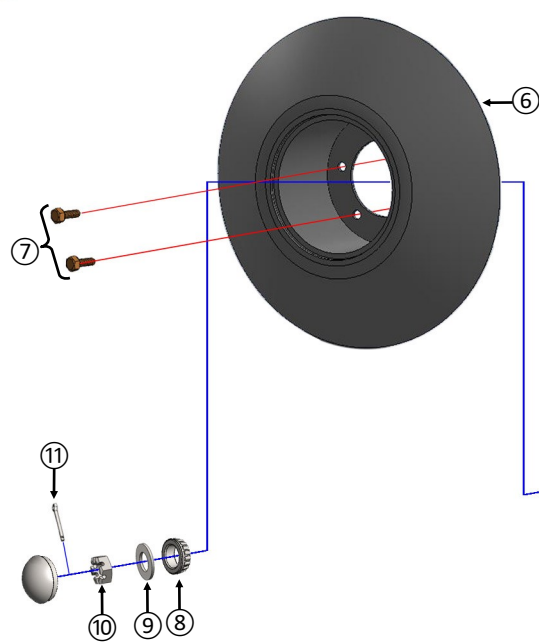
NORWEST PART NUMBER	DESCRIPTION
COI11N393	Bolt-On Knife Injection Bracket Assembly Only (Injector Knife not included) <i>Unit will accept either front or back swept injector knives Can be used in both Dry & Liquid Applications</i>

*N347-40L with COI11N393 and
KCN140 injector knife



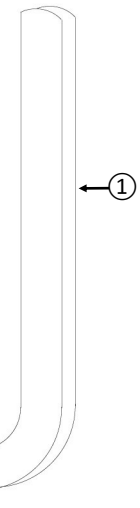
FOR MORE INJECTOR KNIFE OPTIONS
CHECK OUT
SECTION 100-TILLAGE

Welded Steel Wheel Guide Leg Assembly



NORWEST PART #

- GRS-10:** 1" x 3" Straight Leg
- GRC-10L:** 1" x 3" 90° Left Hand
- GRC-10R:** 1" x 3" 90° Right Hand

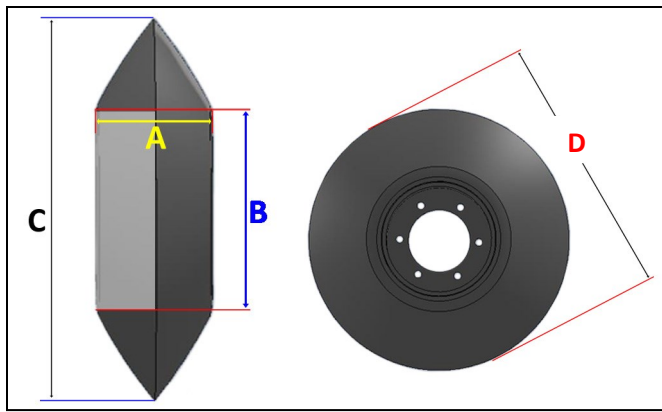


NORWEST PART #

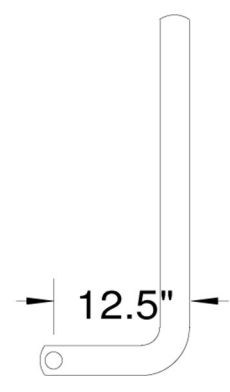
GRC-10L Shown

REF. #	Description	Norwest Part #	Industry Standard #	REQ. PCS.	REF. #	Description	Norwest Part #	Industry Standard #	REQ. PCS.
①	1" x 3" Curved Left Hand Leg	GRCLL-100		1	⑦	Lug Bolt	943549	943549	6
	1" x 3" Curved Right Hand Leg	GRCLR-100				⑧	Outer Bearing	910259	LM67048
②	1-3/4" Spindle for Ace Roller Harrow: Complete*	GQ-888S	280743	1	⑨		Flat Washer	913683	913683
③	Seal	906284	16289	1	⑩	Castle Nut	912952	912952	1
④	Inner Bearing	910264	JL69349	1	⑪	Cotter Pin	905936	905936	1
⑤	Hub Complete*	GQ-888H	280550	1		⑫	Dust Cap	909911A	1604
⑥	6 Bolt Welded Steel Wheel	GRCW-20		1					

* See Section 200-40 for Hub & Spindle Breakdowns



Welded Steel Wheel			
A	B	C	D
5-7/8"	9"	20"	20"
Norwest Part #		Description	
GRCW-20		Blade Part Number: ADG2014P	
GRCW-20 is constructed with two 20" cone blades welded together. One 1/4" x 9" O.D. x 5-7/8" I.D. CRS middle pipe for axel support and strength.			



Solid V-Rubber Guide Wheel Assemblies

V-RUBBER TIRE SERIES

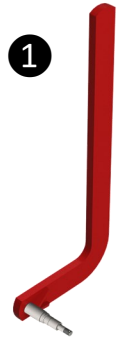
Right & Left Hand Legs: (Suffix) L = Left Hand ◊ R = Right Hand

COMPLETE PART NUMBER	DESCRIPTION	LEG W/SPINDLE ONLY (Less Hub & Blade)	SPINDLE PART NUMBER	HUB PART NUMBER
3/4" x 2-1/2" MATERIAL				
VG34-420L	3/4" x 2-1/2" x 36" Left (Curved Leg)	G633LL-340	GQ-633S	GQ-633H
VG34-420R	3/4" x 2-1/2" x 36" Right (Curved Leg)	G633LR-340		
1" x 3" MATERIAL				
VG1-420L	1" x 3" x 36" Left (Curved Leg)	G633LL-300	GQ-633S	GQ-633H
VG1-420R	1" x 3" x 36" Right (Curved Leg)	G633LR-300		
VG1-420	1" x 3" x 36" (Straight Leg)	G633SL-300	GQ-633S	GQ-633H
V-RUBBER TIRE ASSEMBLY PARTS				
COMPLETE PART #	DESCRIPTION	PHOTO		
VA420-75	4" x 20" V-Tread Tire & Wheel (Complete Assembly)			
VT420	4" x 20" Solid V-Rubber Tire (Tire Only)			
VW420-75	4" x 16" x 11" Rim Half for Bolt on Hub (Rim Only - 1/2 Only)			



①

G633LL-340
&
G633LR-340



①

G633LL-300
&
G633LR-300



①

G633SL-300
Left or Right Hand



LOOKING FOR GAUGE WHEELS?



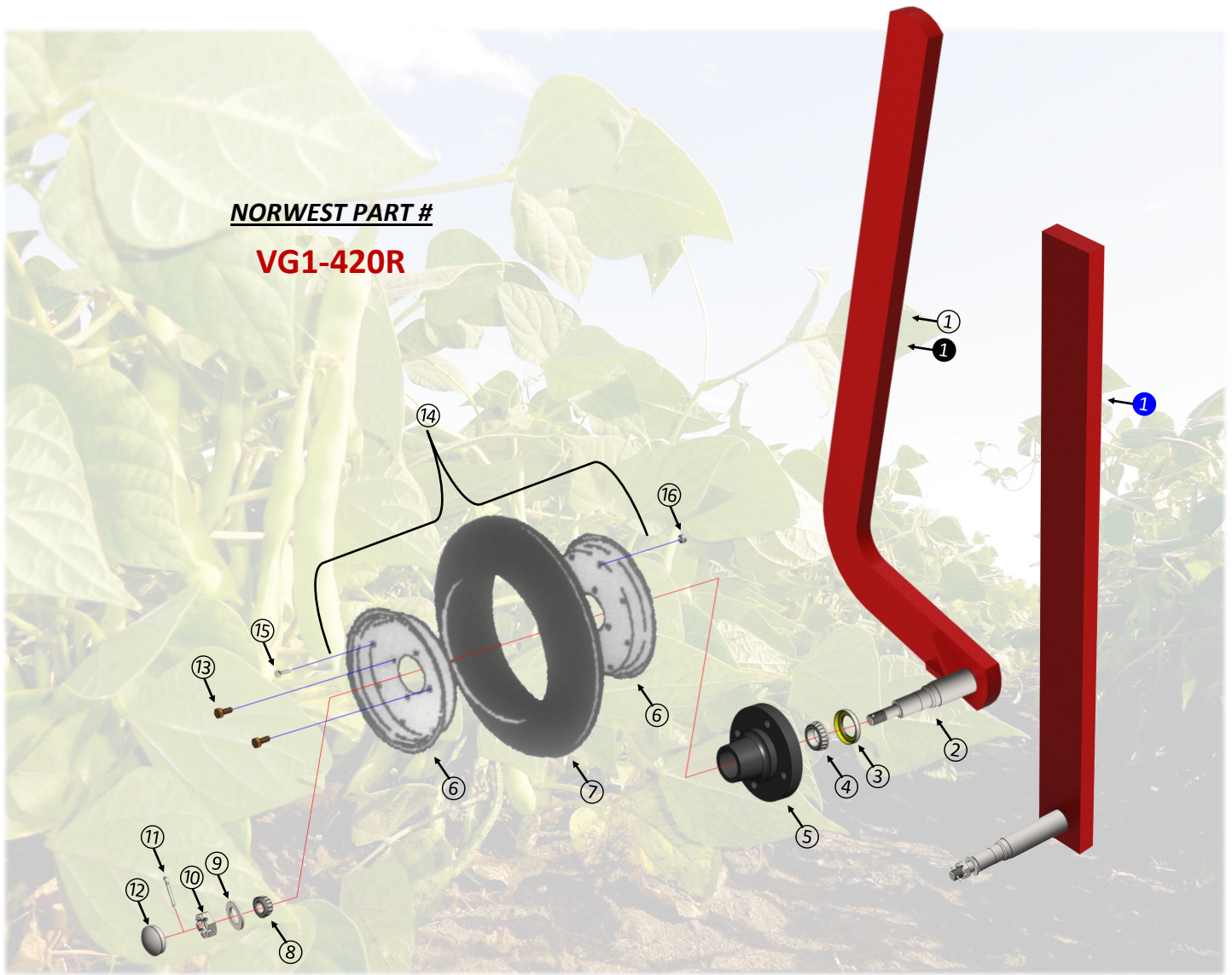
Check out Section 200-50

www.norwest-mfg.com



NORWEST PART #

VG1-420R



Reference Number	Description	Norwest Part Number	Industry Standard Number	Required Pcs.
①	3/4" x 2-1/2" x 36" Curved Guide Wheel Leg: <i>Left Hand</i>	G633LL-340		1
	3/4" x 2-1/2" x 36" Curved Guide Wheel Leg: <i>Right Hand</i>	G633LR-340		
①	1" x 3" x 36" Curved Guide Wheel Leg: <i>Left Hand</i>	G633LL-300		1
	1" x 3" x 36" Curved Guide Wheel Leg: <i>Right Hand</i>	G633LR-300		
①	1" x 3" x 36" Straight Guide Wheel Leg: <i>Left or Right Hand</i>	G633SL-300		1
②	Spindle Complete*	GQ-633S	280741	1
③	Seal	906296	14975	1
④	Inner Bearing	910259	LM67048	1
⑤	Hub Complete*	GQ-633H	280500	1
⑥	4" x 16" x 11" Rim Half for Bolt on Hub (1/2 Rim Only)	VW420-75		2
⑦	4" x 20" Solid V-Rubber Tire (Tire Only)	VT420		1
⑧	Outer Bearing	910260	LM11949	1
⑨	Flat Washer	913608	913608	1
⑩	Castle Nut	912954	912954	1
⑪	Cotter Pin	905936	905936	1
⑫	Dust Cap	909911A	1527	1
⑬	Lug Bolt	943549	943549	4
⑭	4" x 20" V-Tread Tire & Wheel (Complete Assembly)	VA420-75		1
⑮	5/16" x 5/8" Hex Bolt for Rim Assembly	FHB5658G5		8
⑯	5/16" Hex Crimp Lock Nut for Rim Assembly	FHLN56		8

* See Section 200-40 for Hub & Spindle Breakdowns

3-Point Tools 200-321